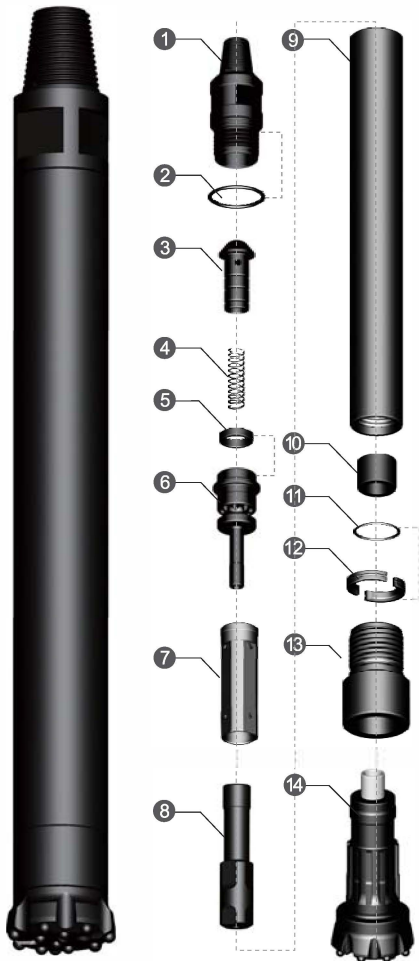


HQL60 DTH HAMMER

HQL60. Hammers	Item Description	Weight (Kg)	Part Number
----------------	------------------	-------------	-------------



1	Top Sub	20.00	HQL60-TSUB
2	"O"Ring of Top Sub	0.02	HQL60-SR-TSUB
3	Check Valve	1.00	HQL60-CVALVE
4	Spring	0.10	HQL60-SPRING
5	Compression Buffer	0.10	HQL60-CBUFFER
6	Air Distributor	6.00	HQL60-DIST
7	Internal Cylinder	5.00	HQL60-ICYL
8	Piston	23.50	HQL60-PISTON
9	External Cylinder	31.00	HQL60-ECYL
10	Guided Sleeve	1.00	HQL60-BUSH
11	"O"Ring of Stop Ring	0.02	HQL60-SR-RING
12	Stop Ring	0.60	HQL60-SRING
13	Drive Chuck	5.40	HQL60-DCHUCK
14	Drill Bit		HQL60-165CC-TV

Technical Data

Length(Less bit)	Weigth(Less bit)	External Diameter	Bit Shank	Hole Range	Connection Thread
1212mm	95.0Kg	Φ148mm	Cop64-G QL 60 HQL 60	Φ165-Φ178	API 3 1/2 " REG
Box Size	Impact rate at 1.7Mpa	Recommended rotation speed	Air Consumption		
			300-350(Psi)		
1270x170x200mm	23HZ	20-30r/min	600-900(CFM)		